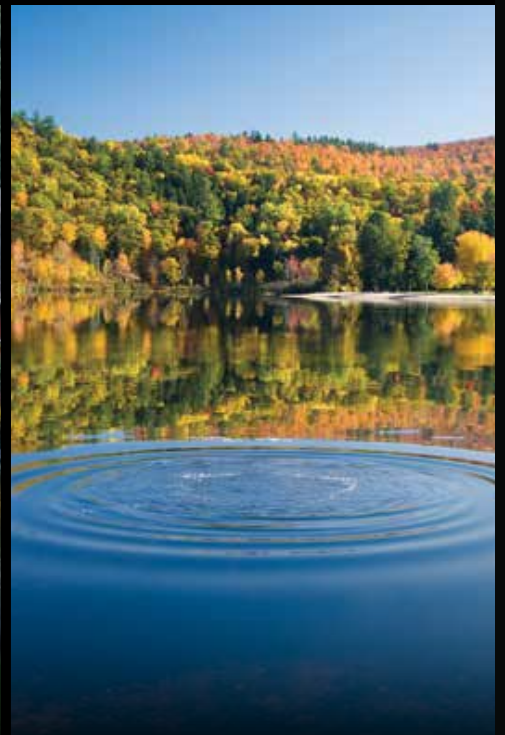




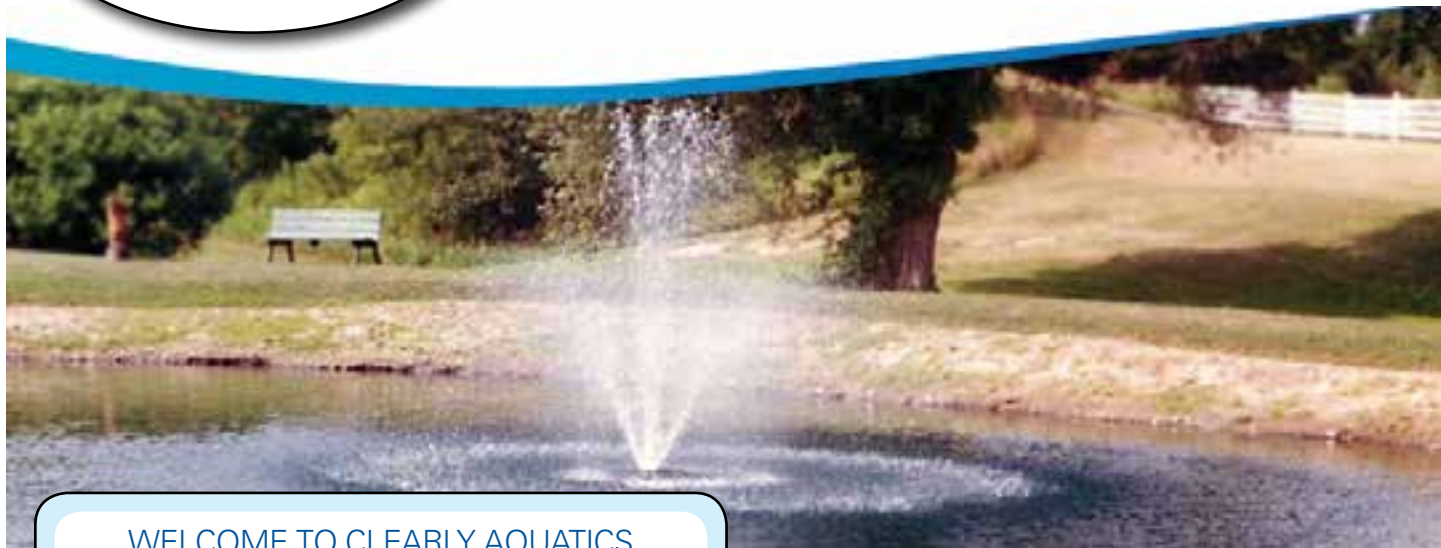
***“The Pond Service Specialists”***



# *Lake & Pond Management Catalog*



Check us out on  • [www.clearlyaquatics.com](http://www.clearlyaquatics.com) • (585) 657-7679



## WELCOME TO CLEARLY AQUATICS

We would like to show you how we can provide the best service at affordable rates.

### **Clearly Aquatics offers fast, friendly and courteous service.**

We use only the best products and equipment and maintain a skilled staff to answer your questions. We have built our reputation on our commitment to providing quality service, which has earned us many valuable customers.

With over 20 years of experience apiece, co-owners Dave Young and Shawn Howard have the know-how to create and maintain your dream pond.

Every pond is custom fit to the customer's needs so that the resulting waterscape far surpasses your expectations.

Dave and Shawn pride themselves in aquatic services after the sale.

We offer service plans that include:

- **Spring start-up**
- **Maintenance throughout the season**
- **Fall shut-down**

We also specialize in the control of nuisance aquatic weeds and cattails.

Please take a moment to browse through our Web site to learn more about our [company](#) and the [services](#) we can provide you.

We look forward to [hearing from you!](#)

*Clearly Aquatics has helped numerous clients turn their ponds from ecological imbalance into a body of water that is an asset to the property. Their passion for the outdoors, drive for success, and aquatic biology, conservation, and fisheries science degrees have made Clearly Aquatics Inc. Western New York's (Rochester, NY and surrounding counties) most complete pond installation and pond service company.*

**Check us out on  • [www.clearlyaquatics.com](http://www.clearlyaquatics.com) • (585) 657-7679**





There are several different names for retention ponds; farm ponds, earthen bottom ponds, golf course ponds, development ponds, etc.

Generally these ponds are 1/8th to 1 acre in size with varying depths. All pond maintenance is site specific.

**We recommend a pond consultation by one of our pond experts.  
We will spend about an hour listening to your key issues and then walk the pond pointing out the good and bad.**

If there are issues you want us to give you estimates on, we will write them up. Depending on the issues, we first utilize natural methods, then mechanical, and finally safe aquatic chemical applications. We maintain and service retention ponds in and around the Rochester, NY area.

### Natural Methods

- **Grass Carp** - Grass carp eat the overgrowth of aquatic plants. These fish are triploid and cannot reproduce. They require a free permit to obtain. They are limited to the type and amount of weeds they will eat. But can prove to be a valid piece of pond maintenance.
- **Pond Colorants** - More info about our [pond colorants](#).
- **Fathead Minnows** - We use minnows to eat mosquitoes larva, and to balance the food web in your pond.
- **Addition of Beneficial Bacteria** - We use a product called Pond-Vive. This is a highly researched and effective product. The special blend of bacteria is fish, pet and family safe. Pond vive reduces sludge and oxygen demand. It eliminates pond odors and excess nutrients as well as improving overall water clarity. It's sold by the bucket in simple water soluble packs that get tossed into the pond. We recommend purchasing enough for one season at a time for best results and price. More details on [Beneficial Bacteria](#).



## Pond Colorants

We use pond colorants to improve the look of your pond.



The pond dyes we use are concentrated and fish safe. When applied in the pond they are safe for swimming and irrigation, too.

It turns muddy ponds a more pleasing color.

One gallon of our product treats 4 acre feet (so one jug will color a 1/2 acre pond 8 ft. deep.)

### Concentrated Pond Dye — Powder

- Four ounce water soluble packets, simply toss into pond for easy application
- Safe for use with fish and aquatic life
- Three WSPs (water soluble packet) will treat one acre, 4' deep
- Each WSP is double sealed in water soluble film



Notice the blue dye. We add organic blue to beautify as well as cuts the sun's rays to the bottom to slow weed growth.

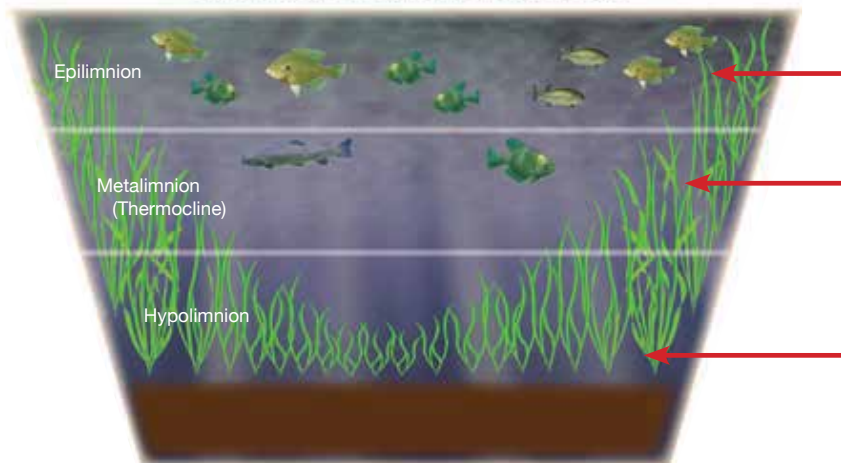
**Part # PD3PSB Serenity pond dye (dry)**

Clearly Aquatics is a leader in the field of lake and pond management. Combined, our sales staff has over 40 years of lake and pond management experience. We can assist you in developing a management plan for nearly any application, from small farm ponds to large lakes.

## Pond and Lake Dynamics

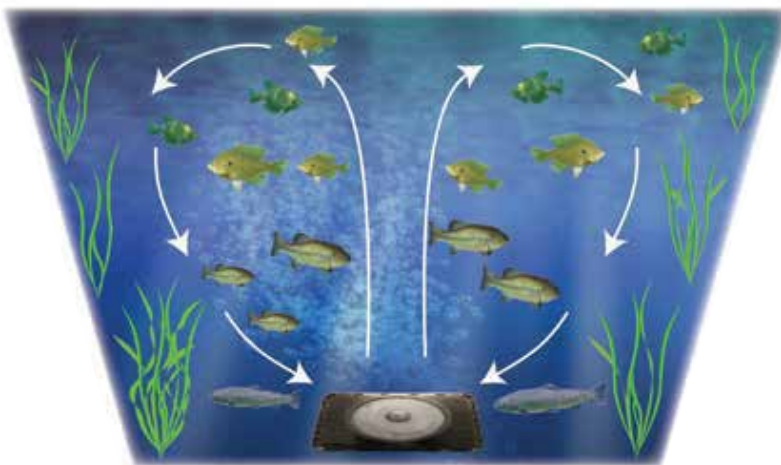
Installing aeration to your pond or lake is the single **most** valuable water management and water maintenance strategy a person can implement. The movement of oxygenated water from the bottom up provides a **long** list of benefits to your water. Ponds and lakes age — the older a body of water, the higher the organic muck load and the higher total oxygen demand (TOD). Aeration can stop, and even reverse, the effects of aging. Oxygen is the “fuel for the engine” that drives all biological and chemical processes in your water.

### Stratified without Aeration



- Warm, typically oxygen-rich
- Recurrent surface scum
- Floating weed masses
- Zone of decreasing water temperature
- Zone of decreasing dissolved oxygen
- Zone completely void of oxygen
- Cold water temperature
- Accumulating organic muck
- Weeds prevalent
- Unusable by fish and all aerobic organisms

### De-stratified with Aeration



- Uniform temperatures
- Uniform oxygen levels
- Fish can use the entire pond all year long
- Improved water clarity
- Reversed aging effects
- Improved natural pond bacteria populations
- Fewer aquatic weed problems
- Improved fish habitat
- Less organic material accumulation
- Protection from winter and summer fish kills
- An enhanced pond ecosystem
- Reduced surface scum build-up
- A better swimming and recreation area

### BENEFICIAL BACTERIA

- Supplementing endemic bacteria in your pond with natural bacteria to help reduce sludge build-up is a widely used practice
- Combining aeration with additional bacteria is a proven method of reversing the aging process mentioned above
- Adding bacteria on a regular basis will improve water quality and clarity, reduce odors, improve oxygen levels and create a better environment for fish and other aquatic life

### WEED AND ALGAE CONTROLS

- There are a wide variety of treatment products available to safely control aquatic weeds and algae in lakes and ponds
- These tested and approved products are a safe, quick way to gain control of water that is infested with undesirable or too many plants
- The use of these products is a good short term solution to a problem, however, to gain long term control you should look at the overall ecosystem and determine the source of the problem
- Often aeration and/or the use of bacteria will greatly improve the system and the use of aquatic chemical herbicides can be reduced

These emergent plants can quickly take over the shallow areas of your pond without control.

Much like your lawn, if you don't mow your lawn within a month you'll have a hay field. Call us to get these under control - we service Rochester, NY and surrounding counties.

Cattails, if treated every few years, will have minimal growth and be easier to control.

We have tried everything to control cattails. Cutting the cattails, putting weird barriers over the areas, drawing the water down so they freeze in the winter, and even burning them. We found the best, and we recommend, way to control the nuisance cattail overgrowth is with safe aquatic herbicide applications.

**We are DEC certified to apply aquatic brush herbicide in ponds.** The product is safer than Roundup. We spray (by backpack sprayer or by truck sprayer) the diluted product directly on the cattails. Within a few minutes they dry and the pond is safe for use per the label. We recommend no pond use for 24 hours.

The product is absorbed and destroys the roots of the plants. Results will begin to show in as little as a few days.

We wait 30 days to make sure all plants are dead before we cut the dead biomass out with our underwater cutters.

The plants are cut as low in the water as possible and then pitch forked onto shore.



Before and After removing cattails.



BEFORE: Cutting back cattails underwater, AFTER: The finished job.

We either dumpster the debris, remove it offsite by truck, or place on the materials in a brush pile.

Pricing for spraying is by the linear foot so measure the cattails around the edge of the pond in feet for an approximate over the phone price.

Cutting depends on the biomass amount and how much they have to be handled.

**Call for a consultation (585) 657-7679.**



### A Pond consultation will provide the best option for your pond.

Safe aquatic chemical applications (also see cattail control, algae control, and aquatic weed control).



Our staff has been DEC certified for being aquatic pesticide applicators.

**We use plant specific products that will NOT HARM fish.**

Each pond is treated like it was our kids and dogs swimming in the pond. **Most of the products we use are as safe as the Roundup you might use in your yard.** If you are in Rochester, NY or surrounding counties, give us a call and we'll take care of your retention pond.



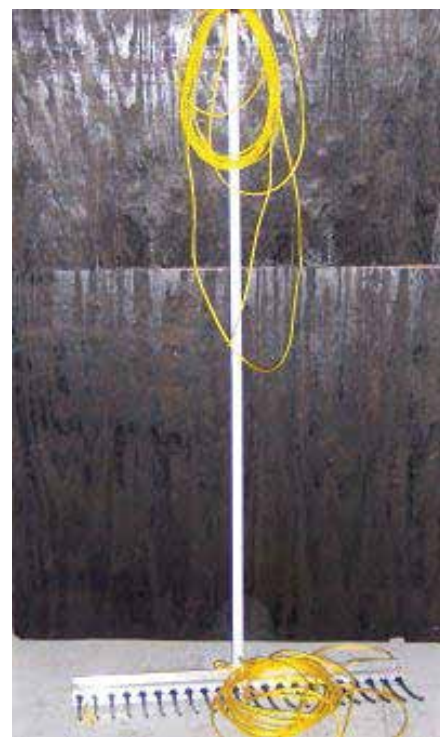
Bushhogging a steep pond bank.

## MECHANICAL



We use 4 different kinds of mechanical pond maintenance equipment... well actually 5 if you count waders (we are in waders most of the year working on ponds!).

- **Floating Booms** - You may have seen this product used to contain oil spills. We use it to skim off floating algae or duckweed. The long booms are floated from one end of the pond to the other collecting the debris on one shoreline where it can be harvested with pitch forks and hand nets. This may be labor intensive, but it does not use any pesticides. The drawbacks are that the algae or duckweed is reduced, but not eliminated so further booming may be needed.
- **Lake Rakes** - These are large aluminum rakes with long teeth and a 20 foot rope attached. The rake is thrown out into the water where it sinks. It is pulled in by hand ripping nuisance aquatic weeds out. Once the problem areas have been harvested the large piles of weeds can be composted on the garden or simply tossed in the woods.
- **Underwater Cutters** - This gas powered unit is used in the pond by a person in waders. Cattails are cut out underwater where they float up and can be harvested by pitchfork and composted. The sicklebar motorized hand held unit is labor intensive, but when used by an experienced pond specialist it can be very effective to reclaiming your pond from overgrown cattails.
- **Excavator/bulldozer** - Our goal is to prevent pond owners from having to get to this step. This can be very pricy and is used when the pond has turned into a swamp!
- **Pond Bank Mowing** - We mow down the scrub grass and high weeds that have overtaken your pond banks. Often times these slopes are steep and should be cut by a seasoned professional.





### Retention pond algae

Algae or the "green-yellow-brownish" slime in your pond can be floating on the surface or bottom growing.

Most of our calls come when the floating algae starts covering over the surface of the retention pond.

**We are DEC certified** for using a safe algacide application.

We use Cutrine Plus liquid for surface algae and Cutrine Granular for bottom growing algae. Results are seen in 2 to 10 days - depending on the weather and the biomass. This product has no use restrictions on your pond per the label, as always we still recommend waiting 24 hours before using the pond.

The only limit to the product is how much algae is destroyed at the time of application. We try to ensure there is no residual algae for future growth.



**Each pond is different. Some only need a once-a-season application, where others need a one-time-per-month application.**

**We provide this service to clients in Rochester, NY and surrounding counties.**

**Give us a call (585) 657-7679.**

### Aquatic Weed Control

Cattails, algae, and submerged weeds, when left unchecked, can reduce fishing, swimming, and aquatic uses to the point where these activities can no longer be enjoyed.

At Clearly Aquatics Inc., biological controls are the first priority. In some cases, however, a safe and effective product application may be the best management tool to bring the pond back into equilibrium. We do this in Rochester, NY and surrounding counties.



The aquatic products of today are so advanced that when applied by DEC certified applicators these products have **NO IMPACT on the amphibians, fish and other wildlife** that utilize the pond.



Once the properly identified nuisance weed is brought under control, Clearly Aquatics will work with you to reestablish and maintain diversity in your aquatic ecosystem.

Clearly Aquatics is also available for on-site consultations with new pond owners who would like to discuss techniques that will prevent maintenance overhauls down the road.



## Wetland Plantings

**Wetlands have a great diversity of terrestrial and aquatic plants and animals and are an extremely beneficial resource to have on your property.**

They improve water quality by collecting and filtering pollutants.

**They protect nearby rivers, lakes, and streams.**

Wetlands provide food and protection for fish and wildlife, including endangered and threatened species.

Finally, wetlands have economic value associated with recreational, commercial, and subsistence use of fish and wildlife resources. We provide wetland planting services around Rochester, NY.

**Over time, many wetland environments have become degraded by human-induced disturbances,** such as the introduction of invasive, non-native plants. This type of vegetation often reduces habitat quality (e.g., loss of food supply) by outcompeting native vegetation.



It creates an unkempt, weedy appearance. These disturbances have not only affected the natural functions of these systems by increasing erosion, reducing vegetation, and degrading habitats, but they have diminished the aesthetic value of the environment.

Nearby land development activities within the watershed also disturb wetlands and waterbodies. These disturbances often result in sediment deposition, nutrient enrichment, and increased stormwater flows into the wetlands. This causes a reduction in water clarity that limits the growth of wetland plants and submerged aquatic vegetation, smothers streambeds, contaminates water quality, and alters natural hydrology.

If you're around the Rochester, NY area contact us about wetland plantings.

## AERATION

**Clearly Aquatics is a major supplier of pond and lake aeration systems. Thousands of aeration systems have been sold ranging from small backyard systems to large lake systems. Whatever your need, we have the products and decades of experience to help you achieve your goals.**

For years aeration was thought of as something you only needed if you had high fish loads in a pond. Through years of working closely with pond owners it has been proven that aeration does far more than just keep fish alive. In fact, we consider aeration to be the single most important step in maintaining a healthy pond. Without oxygen nothing will decompose. All the fish waste, dead algae/plant material, leaves, etc. that fall to the pond bottom will only continue to build up unless there is good oxygen levels to help it decompose. Shallow ponds where the sunlight reaches the bottom and wind action helps stir the water can have adequate oxygen to the bottom in some cases but deeper ponds will seldom have good oxygen all the way to the bottom. A bottom mounted air diffuser can make a huge difference in a ponds health by bringing oxygen and circulation down where its needed the most - along the pond's bottom.



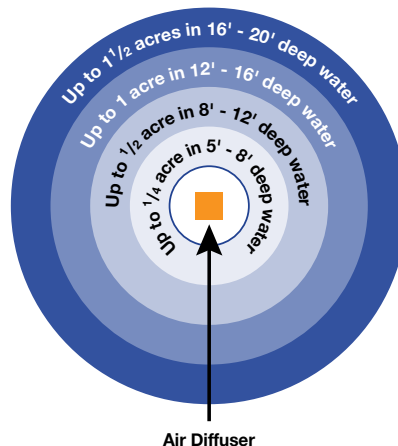




The amount of surface area an aeration system will effectively cover is greatly dependent on two factors - depth and shape.

## Depth

The diagram below shows how much surface area is effectively aerated per air diffuser at various depths:



### Example:

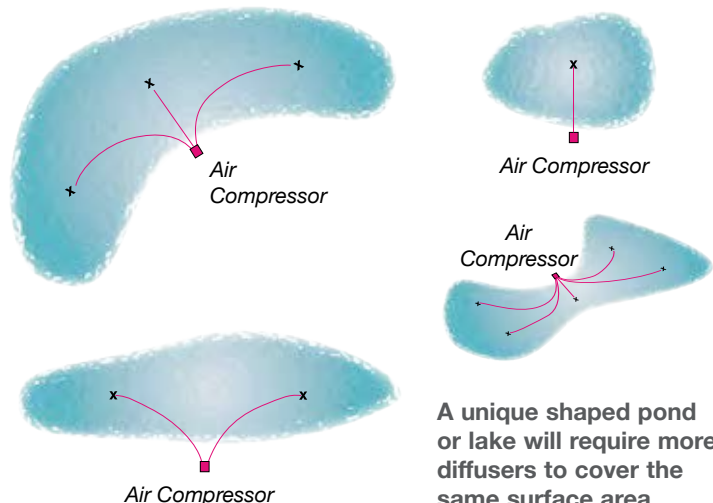
Our PA34 pond aerator would aerate only  $\frac{1}{8}$  of an acre if operated in 4' deep water, while aerating up to  $1\frac{1}{2}$  acres if operating in 16' - 20' of water.

Ponds that are irregular or odd shaped will also reduce size of aeration area — call our technical assistance department for additional help.

The deeper an air diffuser is located, the more boiling action it will create and a larger area will be aerated.

## Shape

Pond shape effects the amount of diffusers needed. Irregular shaped ponds require multiple diffusers to adequately aerate entire water column.



## 1/8 HP DIAPHRAGM AIR COMPRESSOR KIT

- Ideal for ponds 12' or deeper where the PA10 (above) will not work
- PA12 Kit includes compressor, 50'  $\frac{3}{8}$ " poly tubing, two rubber membrane air diffusers with check valve and underlay, fittings and hose clamps. PA12W kit replaces the poly tubing with 50' of Quick Sink tubing.
- Will operate up to 30' deep, motor draws 4.2 amps and pumps 1.1 cfm of air

Part #	Description
PA12	1/8 hp kit with poly tubing
PA12W	1/8 hp kit with Quick Sink tubing



All kits on this page would benefit from SC25 weatherproof cabinets



## 1/4 Hp Rotary Vane Systems

### Basic to Deluxe

- One year warranty on compressor, five year warranty on Quick Sink tubing and diffusers
- Coverage area based on diffusers in 5' to 16' of water, actual area will vary according to diffuser operating depth
- Typical operation cost of \$1.31 per 24 hours (at .09¢ per kwh, actual cost will vary)

### BASIC SYSTEMS

- **PA50** Kit includes compressor, valved outlet assembly with pressure relief valve, 200' of 1/2" poly tubing, two EPMD2 air diffusers, fittings and clamps
- **PA50W** Kit includes all the items above replacing the poly tubing with Quick Sink tubing
- **PA50A** The same kit as above **without** any tubing, buy poly or Quick Sink tubing as needed
- **PA50WLD** Kit includes compressor, valved outlet assembly with pressure relief valve, 200' of 1/2" Quick Sink tubing, fittings and clamps

Part #	# of Diffusers	Tubing Type	Tubing Length
PA50	(2) EPMD2	1/2" Poly*	200'
PA50W	(2) EPMD2	1/2" Quick Sink	200'
PA50A	(2) EPMD2	**	—
PA50WLD	—	1/2" Quick Sink	200'

\*All non-weighted kits now come with actual 1/2" poly tubing

\*\*No tubing included - order tubing as needed.

**1/4 HP SYSTEM  
AERATES UP TO:**  
**1/2 acre at 5'-8' deep**  
**1 acre at 8'-12' deep**  
**2 acres at 12'-16' deep**



## 1/2 Hp Rocking Piston Systems

### Basic to Deluxe

- Two year warranty on compressor, five year warranty on tubing, diffusers and cabinets
- Coverage area based on diffusers in 5' to 16' of water, actual area will vary according to diffuser operating depth
- Typical operation cost of \$1.00 per 24 hours (at .09¢ per kwh, actual cost will vary)

### BASIC SYSTEMS

- **PA66** Kits include compressor, valve assembly with pressure relief valve, 300' of 3/8" poly tubing, three EPMD2 double air diffusers, fittings and clamps
- **PA66W** Kit includes all the items above replacing the poly tubing with Quick Sink tubing
- **PA66A** The same kit as above **without** any tubing, buy poly or Quick Sink tubing as needed on page 30, PA66A is an ideal solution where custom tubing lengths are needed instead of the 300' included in kits above
- **PA66WLD** The same as the PA66W kit less the diffusers, kit includes compressor, brass valve assembly with pressure relief valve, 300' of 3/8" Quick Sink tubing, fittings and clamps

Part #	# of Diffusers	Tubing Type	Tubing Length
PA66	(3) EPMD2	3/8" Poly	300'
PA66W	(3) EPMD2	3/8" Quick Sink	300'
PA66A	(3) EPMD2	**	—
PA66WLD	—	3/8" Quick Sink	300'

All kits 115v, add "2" behind part number for 230v motor \*\*Please order tubing as needed, see page 30

**1/2 HP SYSTEM  
AERATES UP TO:**  
**3/4 acre at 5'-8' deep**  
**1 1/2 acres at 8'-12' deep**  
**3 acres at 12'-16' deep**







## 3/4 HP SYSTEM AERATES UP TO:

1 acre at 5'-8' deep

2 acres at 8'-12' deep

4 acres at 12'-16' deep

## 3/4 Hp Rotary Vane Systems

### Basic to Deluxe

- One year warranty on compressor, five year warranty on Quick Sink tubing and diffusers
- Coverage area based on diffusers in 5' to 16' of water, actual area will vary according to diffuser operating depth
- Typical operation cost of \$2.98 per 24 hours (at .09¢ per kwh, actual cost will vary)

### BASIC SYSTEMS

- **PA75W** Kit includes compressor, valved outlet assembly with pressure relief valve, 600' of 1/2" Quick Sink tubing, four EPMD2 air diffusers, fittings and clamps
- **PA75A** The same kit as above **without** any tubing, buy poly or Quick Sink tubing as needed
- **PA75WLD** Kit includes compressor, valved outlet assembly with pressure relief valve, 600' of 1/2" Quick Sink tubing, fittings and clamps

Part #	# of Diffusers	Tubing Type	Tubing Length
PA75W	(4) EPMD2	Quick Sink	600'
PA75A	(4) EPMD2	**	—
PA75WLD	—	1/2" Quick Sink	600'

*\*\*No tubing included - order tubing as needed.*



## 1 Hp Rotary Vane Systems

### Basic to Deluxe

- One year warranty on compressor, five year warranty on Quick Sink tubing and diffusers
- Coverage area based on diffusers in 5' to 16' of water, actual area will vary according to diffuser operating depth
- Typical operation cost of \$3.47 per 24 hours (at .09¢ per kwh, actual cost will vary)

### BASIC SYSTEMS

- **PA100W** Includes compressor, valved outlet assembly with pressure relief valve, 800' of 1/2" Quick Sink tubing, six EPMD2 air diffusers, fittings and clamps
- **PA100A** The same kit as above **without** any tubing, buy poly or Quick Sink tubing as needed
- **PA100WLD** Kit includes compressor, valved outlet assembly with pressure relief valve, 800' of 1/2" Quick Sink tubing, fittings and clamps

Part #	# of Diffusers	Tubing Type	Tubing Length
PA100W	(6) EPMD2	1/2" Quick Sink	800'
PA100A	(6) EPMD2	**	—
PA100WLD	—	1/2" Quick Sink	800'

*\*\*No tubing included - order tubing as needed.*

## 1 HP SYSTEM AERATES UP TO:

1 1/2 acres at 5'-8' deep

3 acres at 8'-12' deep

6 acres at 12'-16' deep



## Lockable Steel Cabinets



SC22D1

### STANDARD CABINET:

- 16 1/2" W x 22" L x 19" H - will hold all compressors up to RV100 or multiple smaller units with stainless steel lock to protect against vandalism
- 14 gauge galvanized steel with powder coat paint finish
- Includes compressor mounting base to keep compressor up off floor
- Tapered lid - makes front wall shorter allowing easier access to compressor
- Has six 1 1/4" knockouts for airlines and one knockout for incoming power
- Optional fans recommended on any compressors operating in hot climates and on 3/4 hp and larger in all climates

### DELUXE CABINET:

- Above cabinet with cooling fan and electrical box installed
- Cooling fan kits include fan, power cord, guard and hardware
- Electrical box has 1/2" conduit plumbed through floor for easy wiring
- Electrical component kits include outlet, fittings and hardware



SC22

### Build your own deluxe cabinet:

Cooling fan kit includes fan, guard, cord and hardware to mount in SC22

Electrical component kit includes outlet, pvc and hardware to mount in SC22

Part #	Description
SC22	Standard locking cabinet
SC22D1	Deluxe cabinet with electric & 115v fan installed
SC22D2	Deluxe cabinet with electric & 230v fan installed
SCFK1	Cooling fan kit for SC22 cabinet, 115v
SCFK2	Cooling fan kit for SC22 cabinet, 230v
SCELK1	Electrical component kit, 115v
SCELK2	Electrical component kit, 230v

Electrical Components



Lower pricing in 2014 for steel cabinets



Cooling Fan



## Weatherproof Cabinets



This roto-molded polyethylene cabinet is an economical alternative to the steel cabinets. Designed to hold air compressors up to the RV33 (1/4 hp rotary vane) in size. The small foot print makes it easy to hide!

- Ideal for housing all linear compressors, DC22 (PA10), DC12 (PA12), ERP25 (PA34), ERP50 (PA66) and RV33 (PA50)
- Roto-molded in a tan color which blends into existing landscape well
- Built in louver allows fresh air into cabinet, an optional cooling fan is recommended for large compressors or in hot locations, fan comes installed in second vent hole with louver

Part #	Description
SC25	Cabinet, 15" x 25" x 15"h
SC25F1	Cabinet with 115v fan installed
SC25F2	Cabinet with 230v fan installed





All ponds should have a dock as any pond owner knows we are drawn closer to water. Children and adults will love this floating dock made out of “blocks” for a much more stable platform. This design is so strong that there is no need to remove your dock for the winter! All stainless steel hardware and choice composite decking included for years of maintenance-free use. An approximate 7' long ramp connects you from the shore to the dock for a smooth transition. The walkway is 8' x 4' and the “L” is 8' x 4' for an overall 19' x 8' dock that really gets you out onto your pond. Fishing, swimming, or just sitting in a couple of Adirondack chairs from your new dock will add so much enjoyment to your pond. The pond service experts will deliver and install your new dock as well! Give us a call and we will get building today!



## SAFETY STATION SIGN

Help protect you and your family from the liability of trespassers and increase the safety of your pond with this pond-side safety station. Included 12" x 18" heavy duty outdoor plastic no swimming sign, stainless steel mounting hardware, stainless steel hook bracket, 24" white life ring, installed on a 5' green metal “t” post. We recommend 1 per long side of your pond (2 per 1/4 acre-1/2 acre pond; 4 per 1 acre pond)



## Surface Aeration

Clearly Aquatics offers a wide variety of fountains and surface aerators. Our volume allows us to sell the best fountains at the lowest prices. A variety of patterns, sizes ranging from 1/4 to 25 hp and light packages for nighttime displays, assures we have a fountain for most every application. Shop and compare – we offer the best selection and lowest prices in the industry.



Surface fountains are a popular choice when decorative looks are desired. Golf courses, parks, office buildings and housing developments are all common places you see fountains used. Many different spray patterns are available creating esthetically pleasing looks while creating circulation and aeration. Since the fountains float on the surface the circulation does not reach all the way to the bottom in deep applications which reduces their effectiveness.

Since fountains do create good water movement at the pond's surface, they are helpful in keeping pollen, duckweed, watermeal and other surface debris under control.







## Surface Aerators

Surface aerators are the highest oxygen producing and highest volume aerators offered. For applications desiring maximum flow and efficiency these units are the best choice.

- 50' power cord standard, longer lengths available
- Designed for continuous duty operation in fresh or salt water
- Thermal overload protection with automatic reset
- Easy to install or remove – making it great for portable emergency operation
- Warranties: two years on 1/2 - 1 hp, three years on 2 - 5 hp
- Operates in as little as 15" of water

Because of their high pumping rates these units are especially helpful in controlling floating debris, duckweed and other unsightly surface problems. A high oxygen transfer make these units the best pick for aquaculture applications and wastewater ponds.

Part #	Description	Voltage/Amps	Approx. Gpm
AF2400	1/2 hp aerator	115/5.0	600
AF3400	3/4 hp aerator	115/6.7	800
AF3400H	3/4 hp aerator	230/3.4	800
AF4400	1 hp aerator	115/11.3	1200
AF4400H	1 hp aerator	230/5.7	1200
AF8400H	2 hp aerator	230/11	2000
AF3.1H	3 hp aerator	230/13.4	3000
AF5.1H	5 hp aerator**	230/20	5000

\*\*5 hp includes 100' power cord with quick disconnect



\*Dimensional Rates Apply on Floats

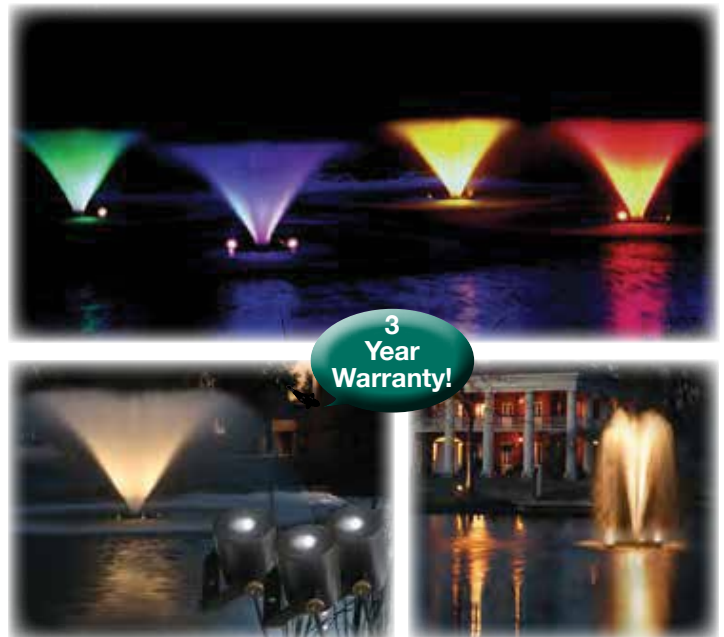


## Fountain Lighting Packages

Kasco offers several high quality LED lighting packages to complement their line of fountains. A well lit fountain display at night is a sure way to attract attention.

• **KL3C11/KL6C11 Lights** — Industrial grade composite LED light kits, uses 11 watts per fixture and includes color choices of white, blue, red, yellow or green. Includes disconnect on cords.

• **KL3S19/KL6S19 Lights** — These bright stainless steel LED light kits use 19 watts per fixture and comes in white only. This series of lights is certified to UL and CSA standards. Order with or without quick-disconnect cords (see chart below). Includes colored lens caps.



Part #	Description	Warranty
KL3S19	Stainless steel three light LED kit	2 Years
KL6S19	Stainless steel six light LED kit	2 Years



## 1/2 to 5 Hp VFX Aerating Fountains

Available in 1/2, 3/4, 1, 2 and 5 hp

These Kasco fountains combine decorative good looks along with high oxygen transfer, making them the perfect choice for surface aeration. Kasco fountains are easy to install and energy efficient. They come complete with fountain, float, mooring ropes, 100' power cord and control panel (below)

### 5 Hp Fountain

Kasco is pleased to offer a 5 hp propeller driven fountain

- This bad boy pumps over 800 gpm and produces a thick, heavy spray pattern of 9' high x 34' diameter!
- Outstanding oxygen transfer rates, aesthetically pleasing patterns and low overall operating costs — each unit is fully self contained and floats into place in your pond or lake



230v Control Panel



115v Control Panel

All fountains listed below come complete with control panel (above). This includes a weatherproof enclosure, GFI protection, a timer for fountain and a timer for lights.



See page 43 for light kits to turn your fountain into a beautiful night time display



All Kasco fountains are UL and CSA approved!

**Two year warranty on 1/2, 3/4 and 1 hp fountains, three year warranty on 2, 3 and 5 hp fountains**  
**2 hp and 5 hp VFX fountains also available with three phase motors - contact us for more information**



\*Dimensional Rates Apply on Floats

Part #	Description	Voltage	Amps	Spray Pattern	Gpm Pump Rate	Minimum Water Depth
VFX2400	1/2 hp fountain	115	5.0	5'h x 15' dia.	89	15"
VFX3400	3/4 hp fountain	115	7.3	6'h x 21' dia.	111	18"
VFX3400H	3/4 hp fountain	230	3.7	6'h x 21' dia.	111	18"
VFX4400	1 hp fountain**	115	11.3	8'h x 26' dia.	186	19"
VFX4400H	1 hp fountain	230	5.7	8'h x 26' dia.	186	19"
VFX8400H	2 hp fountain**	230	10	8'h x 32' dia.	336	20"
VFX5.1H	5 hp fountain**	230	20	9'h x 34' dia.	800	26"

\*\*Power cord includes quick disconnect





## "J" Series Multi-Nozzle Fountains

3/4 to 7.5 hp — You get multiple spray nozzles for the price of one - allows you to change the look of your fountain as desired



Linden Pattern - 2 Tier



Cypress Pattern



Sequoia - 3/4, 1, 5 hp



Spruce - 2, 3, 5 hp



Willow Pattern



Juniper Pattern

**Fountains come complete with motor, float, 100' power cord, control panel (with timer/GFI) and mooring ropes**

**All fountains are UPS-able for reduced ship cost (except 7.5 hp)**

### Fountain Performance Chart:

Pattern	3/4 hp Ht. x Dia.	1 hp Ht. x Dia.	2 hp Ht. x Dia.	3 hp Ht. x Dia.	5 hp Ht. x Dia.
Linden	6' x 18'	8' x 24'	18' x 30'	19' x 35'	20' x 35'
Cypress	6' x 16'	8' x 24'	n/a	n/a	n/a
Willow	4.5' x 15'	6' x 22'	12.5' x 28'	13' x 35'	14' x 36'
Juniper	3' x 20'	4' x 27'	8' x 46'	9' x 48'	10' x 50'
Sequoia	7' x 4'	10' x 6'	n/a	n/a	21' x 10'
Spruce	n/a	n/a	19' x 10'	21' x 13'	24' x 15'
Birch	n/a	n/a	12' x 11'	14.5' x 10'	14' x 12'
Redwood	n/a	n/a	22' x 7'	24' x 8'	26' x 8'



Birch - 2, 3, 5 hp



Redwood - 2, 3, 5 hp

**2, 3, 5 and 7.5 hp fountains are available with three phase motors - contact us for more information**



### Additional nozzles for 2-5 hp

Part #	Description	Voltage /Amps**	Minimum Operating Water Depth
JF3400	3/4 hp fountain w/5 patterns	115/6.5	18"
JF3400H	3/4 hp fountain w/5 patterns	230/2.9	18"
JF4400	1 hp fountain w/5 patterns*	115/11	18"
JF4400H	1 hp fountain w/5 patterns	230/5.5	18"
JF8400H	2 hp fountain w/6 patterns*	230/10	20"
JF3.1H	3 hp fountain w/6 patterns*	230/13.4	24"
JF5.1H	5 hp fountain w/7 patterns*	230/20	26"
JF7.3H	7.5 hp fountain w/3 patterns*	3 Phase Only	32"



\*\*\*Dimensional Rates Apply on Floats



\*Power cord includes quick disconnect \*\*Indicates amp draw may vary up to 10% depending on nozzle used



## Beneficial Pond Bacteria

Success in controlling water quality in a pond is subject to several variables. One of the main variables is the amount of nutrients present in the pond. Most pond owners are happy to find that when their pond fills up initially after being dug, the water is clean and inviting. Ponds that are dug in sand, gravel or "clean" soils will generally stay that way for a period of a year or two since there is not a lot of nutrients present. Over time leaves, fish waste, runoff and other nutrients find their way into the pond and start to build up along the pond bottom. These nutrients act as a stimulant, or food source, for excess aquatic weeds, algae and other water quality problems.

The use of enzymes and beneficial pond bacteria has proven to be one of the best tools (along with aeration) a pond owner can use to maintain water quality. Beneficial bacteria are like mini vacuum cleaners working along the pond's bottom to consume and digest organic materials such as decayed leaves, grass clippings, dead algae/weeds,

fish waste, etc. Left in the pond, these materials will contribute to future water quality problems.

Most all ponds contain natural bacteria. The problem is these are usually anaerobic bacteria (meaning they do not need oxygen to survive) and they digest sediment very slowly. Pond-Vive contains aerobic bacteria which does require oxygen to survive (emphasizing the importance of aeration in ponds) but decomposes organic muck at a much faster rate.

### Pond-Vive

Pond-Vive is a proprietary blend of enzymes and beneficial bacteria strains that are specifically formulated for the task of lake and pond maintenance. The four blends of enzymes break down the waste in the pond to a easily digestible form for the bacteria speeding up the cleaning process in the pond. This premium pond maintenance blend contains five billion CFU per gram, includes fish safe *Pseudomonas* and *Bacillus* bacteria blends along with a cold water strain for longer, more effective seasonal benefits. Both barley straw and a growth nutrient are also added to the blend making this one of the most concentrated, effective products ever offered. Pond-Vive bacteria works best when the water temperatures are above 45°, although some beneficial activity will occur as low as 38°.

### Sludge Remover Pellets

Sludge Remover Pellets are an ideal way to bring beneficial bacteria quickly to the bottom of a pond or lake. The pellets sink directly where applied and bring full strength treatment to that specific area. The pellets sink slightly into the bottom sediment which helps to prevent drifting of the bacteria due to waves, boating, water currents, etc. This product is the preferred choice when treating part of a larger body of water such as coves or bays on a lake, around docks, swimming areas, etc.







Now  
With  
Enzymes

## Pond-Vive



### The natural, biological way to revive your pond

This special blend of enzymes and bacteria is designed to:

- Reduce sludge buildup
- Eliminate pond odors
- Reduce oxygen demand
- Eliminate excess nutrients
- Improve water clarity
- Safe for fish, family and animals

### Premium Formula Includes:

- Concentration level of five billion colony forming units per gram
- Fish safe pseudomonas and bacillus strains
- Growth nutrient to stimulate bacteria
- Enzymes - four strains which break down waste into an easier digestible form for the bacteria — speeds up the process!
- Cold weather bacteria strain, for results in temperatures as low as 38°F
- Barley straw additive

### Dosage Rates:

For best results Pond-Vive should be added every two weeks when water temperatures are above 55°F (can be added at colder temperatures but results will be diminished). The amount needed depends on the condition of the pond. Below is a guideline:

**Newer ponds with little "muck"**      **Older ponds with high levels of "muck"**  
Apply 4 lbs. per surface acre/2 weeks      Apply 6 lbs. per surface acre/2 weeks

*For best results the initial application should be doubled to jump start the process.*

### Example — one 10 lb. pail treats:

Pond Size	Newer Pond	Older Pond
1/4 Acre	5 Months	3 Months
1/2 Acre	2.5 Months	1.5 Months
1 Acre	1.25 Months	.75 Months

**A 25 lb. bulk pail extends months treated by 2.5 times**



Available in several sizes  
from small packets for easy  
dosing to bulk drums for  
the service professional



*"Pond-Vive is great stuff!" - Jim K.,  
Spring Valley Trout Farm, Dexter, MI*

*"Pond-Vive works great!" - Shaun M.,  
Perennial Landscapes, Kent, CT*

*"I purchased a pail of Pond-Vive from  
a local supplier to help clear up my  
pond before my grand kids came to  
visit. After using Pond-Vive just three  
weeks the pond issues were gone  
and the swimming was great."  
- Paul K., Hampton, NY*



Part #	Description
<b>PB8X</b>	Eight ounce water soluble packets (each)
<b>PB10X</b>	20 Eight ounce water soluble packets (10 lbs.)
<b>PB25X</b>	50 Eight ounce water soluble packets (25 lbs.)
<b>PB100X</b>	100 lb. Fiber drum bulk bacteria (loose powder)



# ***We Look Forward To Working With You!***



***Before***



***After***



***Call Us Today!***

Check us out on  • [www.clearlyaquatics.com](http://www.clearlyaquatics.com)  
**(585) 657-7679**